



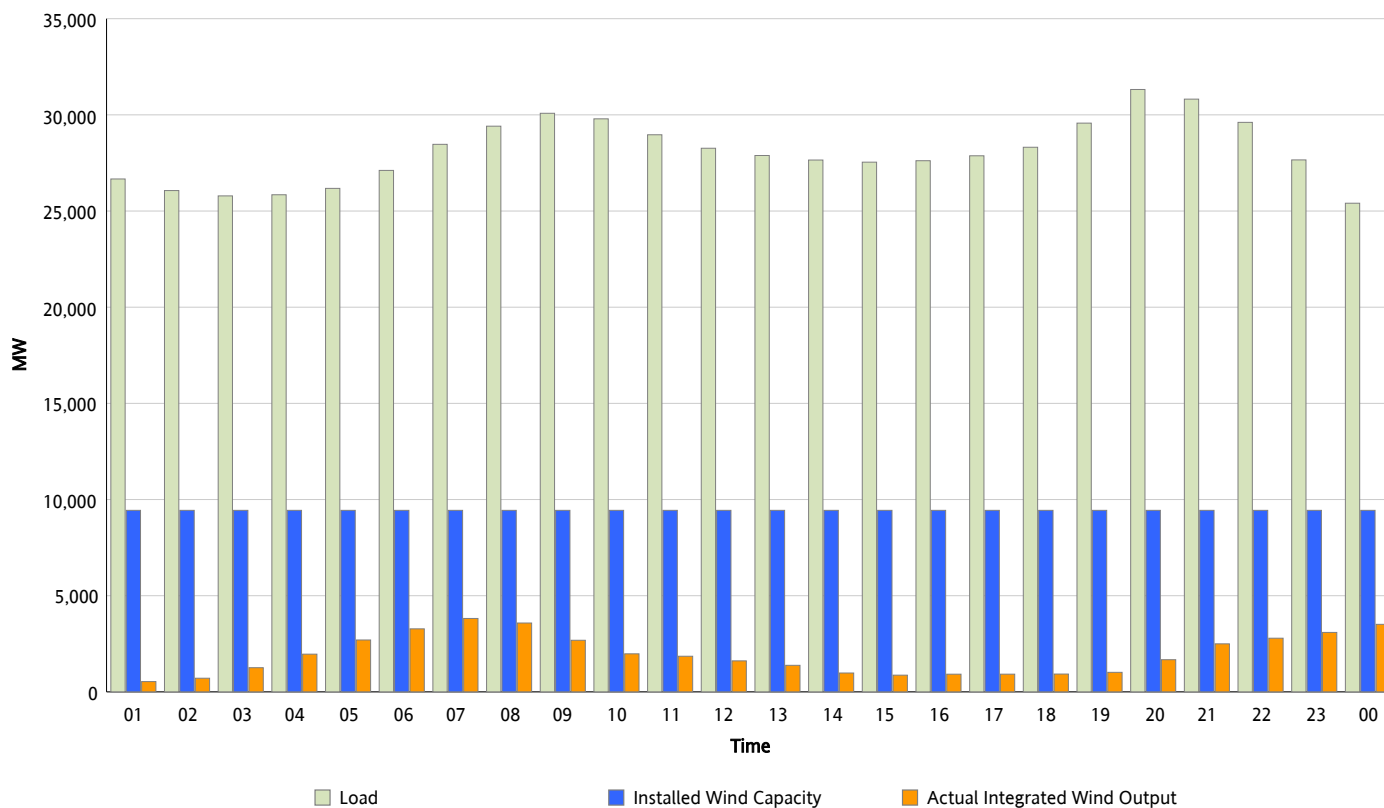
ERCOT Grid Operations

Wind Integration Report : 03/04/2012

| | |
|----------------------|-----------|
| Peak Load | 31,319 MW |
| Load Peak Hour (HE) | 20 |
| Wind Over Peak | 1,673 MW |
| Wind Record 10/07/11 | 7,400 MW |
| Max Wind Value* | 3,903 MW |
| Wind Peak Time | 06:23 |
| Wind Integration % | 13.7 % |

Hourly Average Actual Load vs. Actual Wind Output

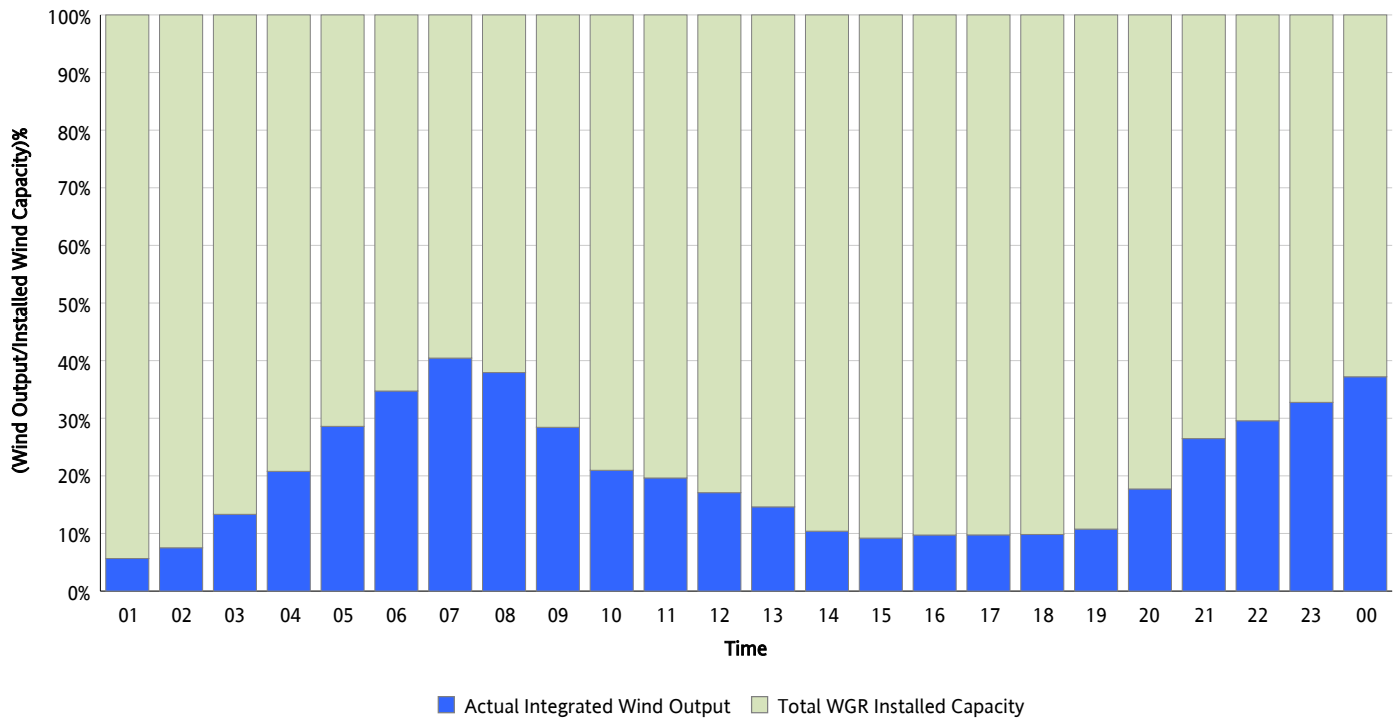
03/04/2012



* Wind Max represents the instantaneous value and the rest of the values are integrated over the hour

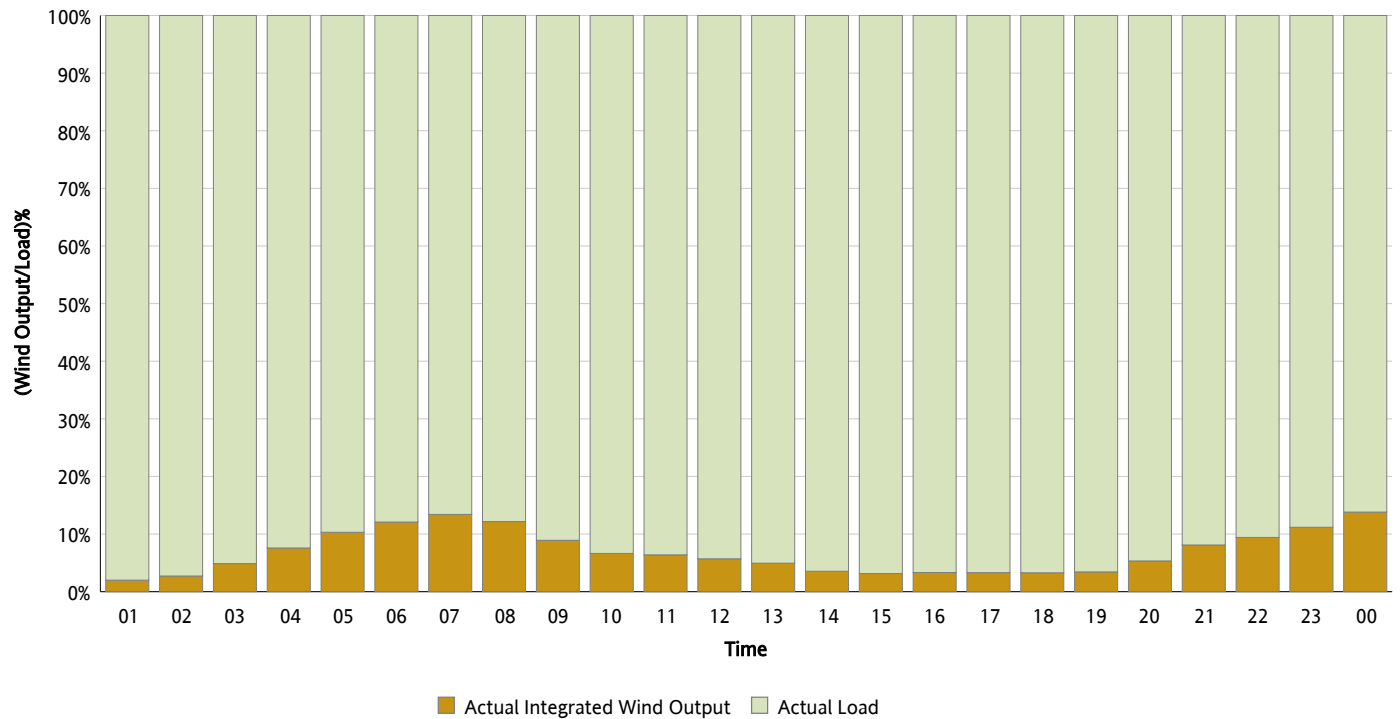
Actual Wind Output as a Percentage of the Total Installed Wind Capacity

03/04/2012



Actual Wind Output as a Percentage of the ERCOT Load

03/04/2012



ERCOT Load vs. Actual Wind Output

02/26/2012 - 03/04/2012

